

# Full-System Solutions for Mini Excavators

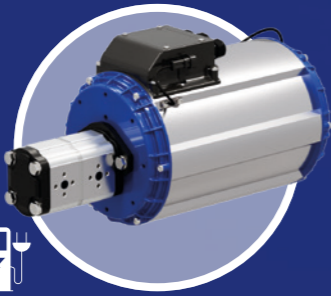
Dana's solutions improve the worksite performance of electric-driven mini excavators through numerous advanced technologies. Improved rotational efficiency and controllability enable smooth, precise positioning, while electronic load-sensing capabilities improve system efficiency and safety.

Dana electric systems covers all the functions that allow the best balance between cost and performance. This system includes an e-Pump motor, e-Slew drive, and inverters working in synergy to create the best conditions for sustainable work.



## Brevini® e-Slew Drive

- Compact and efficient
- Allows the drive to fit into the existing machine frame
- Delivers the best efficiency for longer battery life



## TM4™ e-Pump Motor

- Effective performance and operation with a compact design
- SYR and IPM technology for high-efficiency
- Modular approach



## TM4™ LVI420 Low Voltage Inverter

- Most power-dense inverter with patented in-house MOSFET multilayer power modules
- Open and fully flexible application software configuration

